

# SHALINI GANENDRA FINE ART

General Collection & Collector's Cube

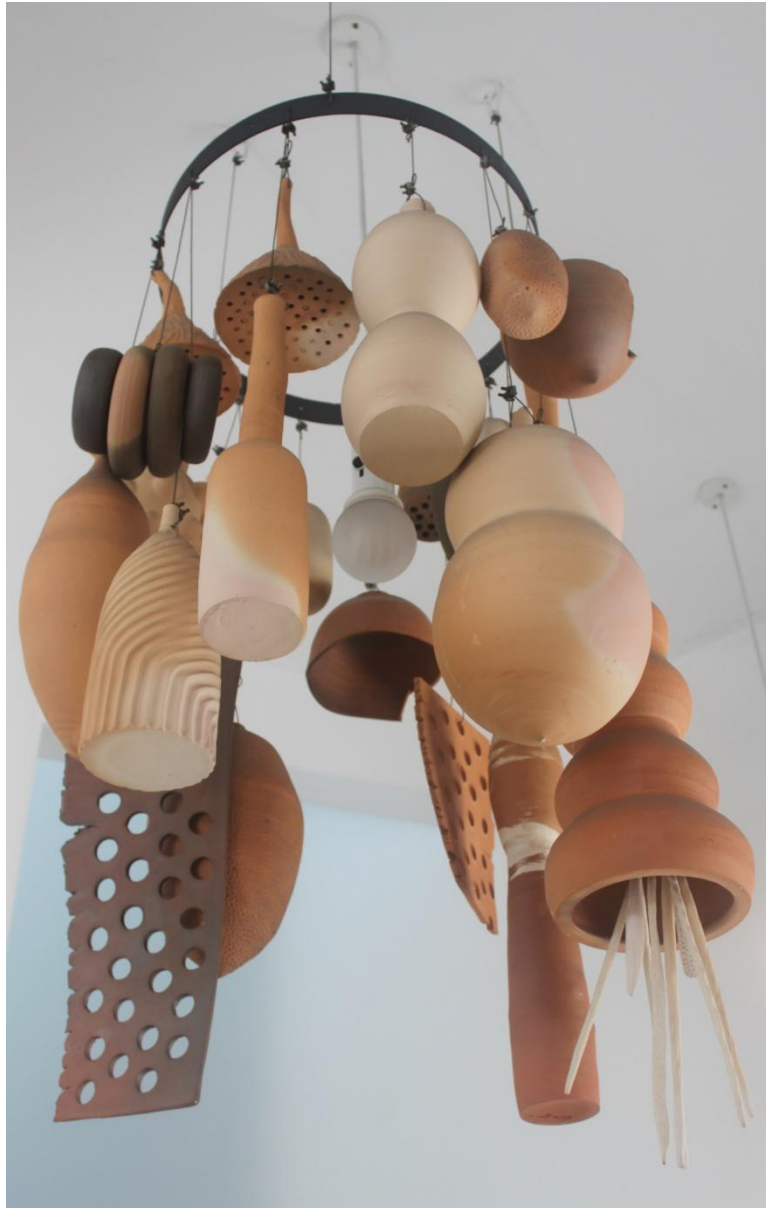
General Collection



Zac Lee, *Fighting Fish*, 2014  
Oil on jute, 90 x 213 cm



Zac Lee, *Ideal & Reality*, 2013  
Oil on jute, 175 x 138 cm



Lileng Wong, *Origins Chandelier*, 2011  
Ceramic, dimensions variable



Jasmine Kok, *Seed*, 2009  
Italian marble, 30.5 x 30.5 x 11.3 cm

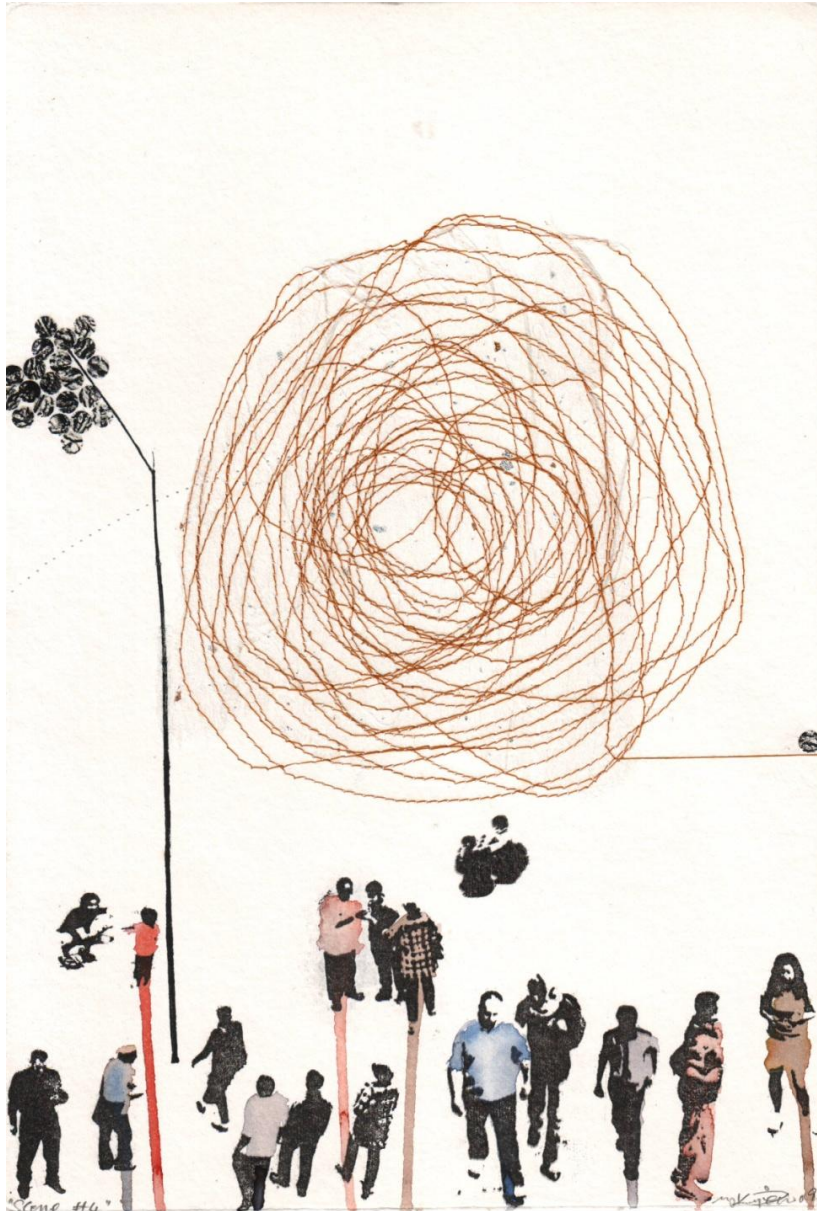


Jasmine Kok, *DisUnity*, 2013  
Ipoh marble, 2 pieces; 100 x 53 x 73 cm, 104 x 50 x 73 cm



Jasmine Kok, *Union*, 2013  
Marble, 70 x 50 x 104 cm





Kim Ng, *Scene #4*, 2013,  
Object-print, watercolour, collage & colour thread, 20 x 29.5cm



Kim Ng, *Scene #5*, 2013  
Object-print, watercolour, collage & colour thread, 20 x 29.5cm



Kim Ng, *Untitled (88)*, 2012  
Mixed media on paper, 20 x 29.5 cm



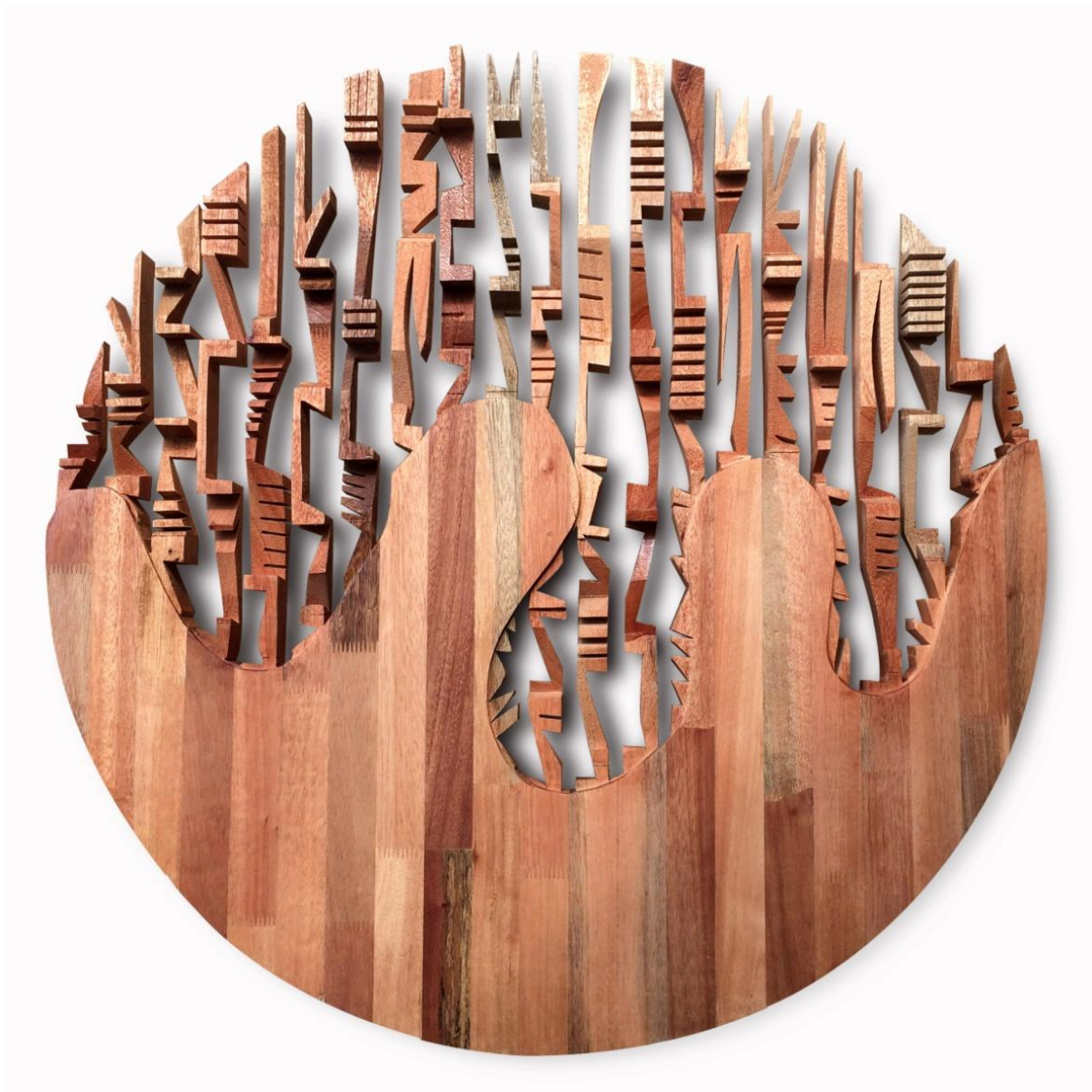
Kim Ng, *Untitled (90)*, 2012  
Silkscreen, charcoal, bitumen on paper, 20 x 29.5 cm



Anniketyni Madian, *Bali Belulai #3*, 2014  
Woods, 121.9 x 121.9 cm



Anniketyni Madian, *Bali Tebekang*, 2014  
Woods, 61 x 61 cm



Anniketyni Madian, *Kumbu Muau #3*, 2014  
Woods, 91.4 x 91.4 cm



Eiffel Chong, *Kampung Sungai Sekawang*, 2012  
C-print, 99 x 127cm





Eiffel Chong, *Tanjong Sepat #3*, 2012  
C-print, 99 x 127cm



Eiffel Chong, *Bagan Ajam # 1*, 2012  
C-print, 99 x 127cm



Eiffel Chong, *Pasir Panjang #1*, 2012  
C-print, 99 x 127cm



Eiffel Chong, *Minyak Beku*, 2012  
C-print, 99 x 127 cm



Eiffel Chong, *Pantai Redang #1*, 2012  
C-print, 99 x 127 cm



Bibi Chew, *Homesteader 1*, 2014  
Wood, 34.8 x 43.3cm



Bibi Chew, *Homesteader 2*, 2014  
Wood, 34.8 x 43.3cm



Bibi Chew, *Homesteader 3*, 2014  
Wood, 34.8 x 43.3cm





Bibi Chew, *Homesteader 4*, 2014  
Wood, 34.8 x 43.3cm



Bibi Chew, *Homesteader 5*, 2014  
Wood, 34.8 x 43.3cm



Bibi Chew, *Homesteader 7*, 2014  
Wood, 34.8 x 43.3cm



Bibi Chew, *Homesteader 8*, 2014  
Wood, 34.8 x 43.3cm



Bibi Chew, *Homesteader 9*, 2014  
Wood, 34.8 x 43.3cm



Minstrel Kuik, *M for Malaise 1*, 2008-2012  
C-print, 29.7 x 21cm



Minstrel Kuik, *M for Malaise 2*, 2008-2012  
C-print, 29.7 x 21 cm



Minstrel Kuik, *M for Malaise 3*, 2008-2012  
C-print, 29.7 x 21 cm





Minstrel Kuik, *M for Malaise 4*, 2008-2012  
C-print, 29.7 x 21 cm



Minstrel Kuik, *M for Malaise 5*, 2011  
C-print, 29.7 x 21 cm



Minstrel Kuik, *M for Malaise 6*, 2008-2012  
C-print, 29.7 x 21 cm



Minstrel Kuik, *M for Malaise 7*, 2011  
C-print, 29.7 x 21 cm



Minstrel Kuik, *M for Malaise 8*, 2008-2012  
C-print, 29.7 cm x 21 cm



Eric Peris, *Limestone cliffs in a mining pool*, 2012  
C-print, 45 x 68 cm



Eric Peris, *Laterite Dunes*, 2012  
C-print, 45 x 68 cm

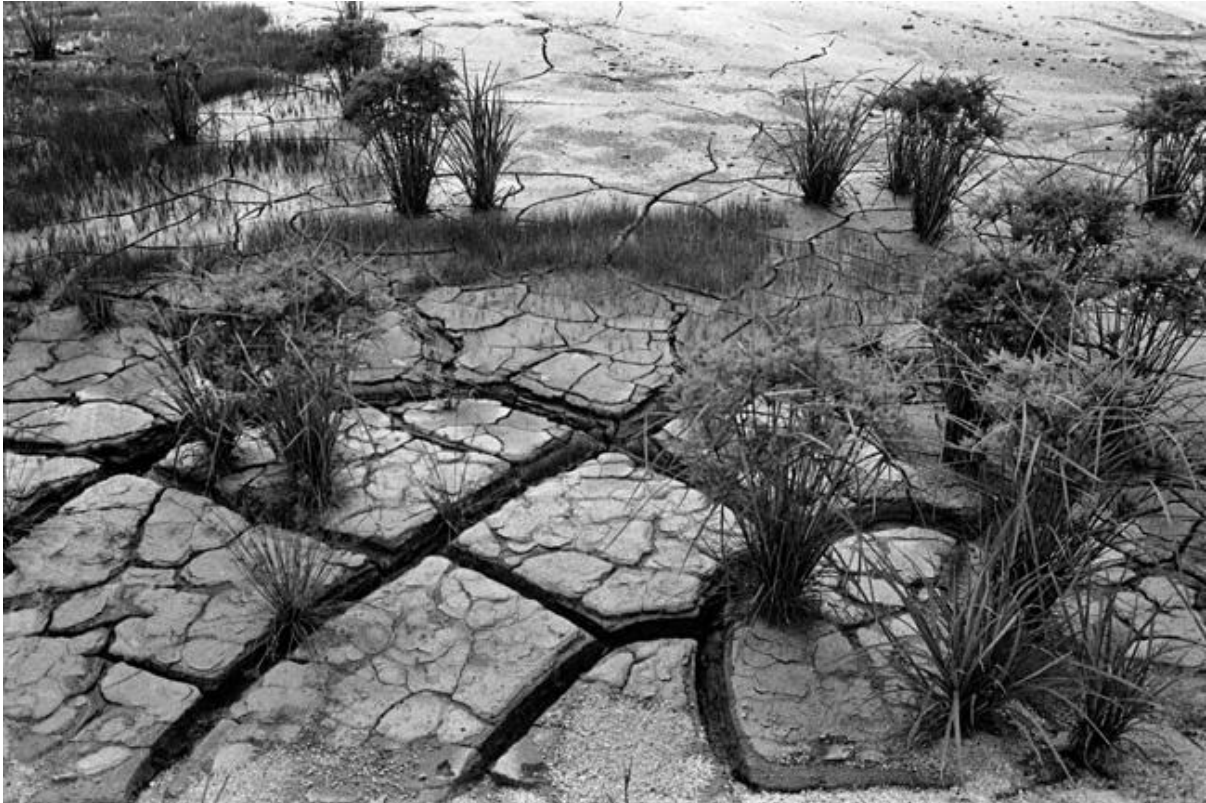


Eric Peris, *Common Reeds*, 2012  
C-print, 45 x 68 cm





Eric Peris, *Sand Mountains*, 2012  
C-print, 45 x 68 cm



Eric Peris, *Jigsaw Mud Bank*, 2012  
C-print, 45 x 68 cm



Eric Peris, *Sand Stands and Mud Clusters*, 2012  
C-print, 45 x 68 cm

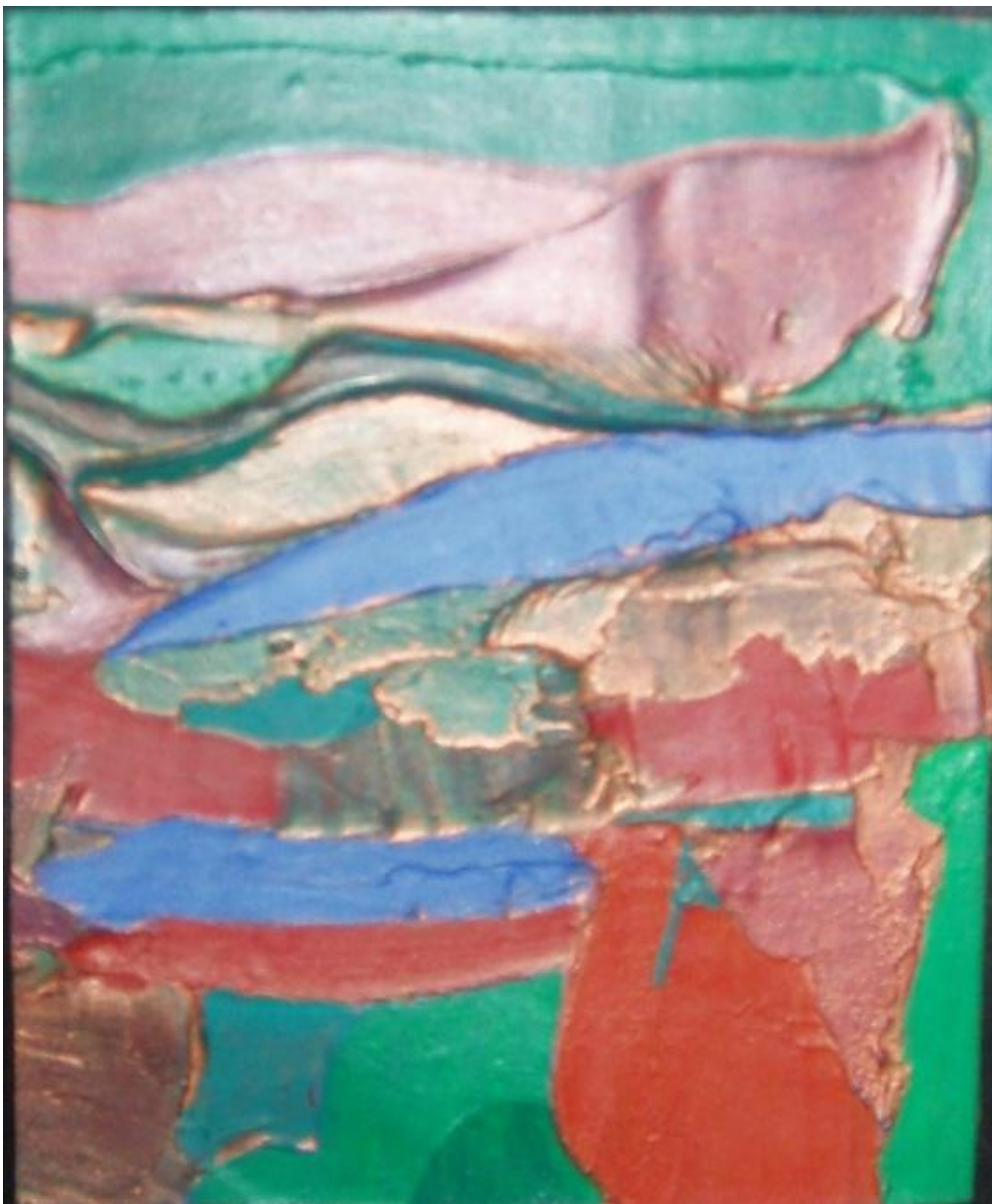


Eric Peris, *Palong and small village hut*, 2012  
C-print, 45 x 68 cm



Eric Peris, *A path of Tiger Tongue into the middle of the Pool*, 2012  
C-print, 45 x 68 cm

Collector's Cube  
September 2 – October 15 2014



Sharifah Fatimah Zubir, *Abstract*, c. 1998  
Oil on board, 23 x 19 cm



Jalaini Abu Hassan, *Air Tudung*, 1999  
Mixed media on paper, 63 x 44 cm

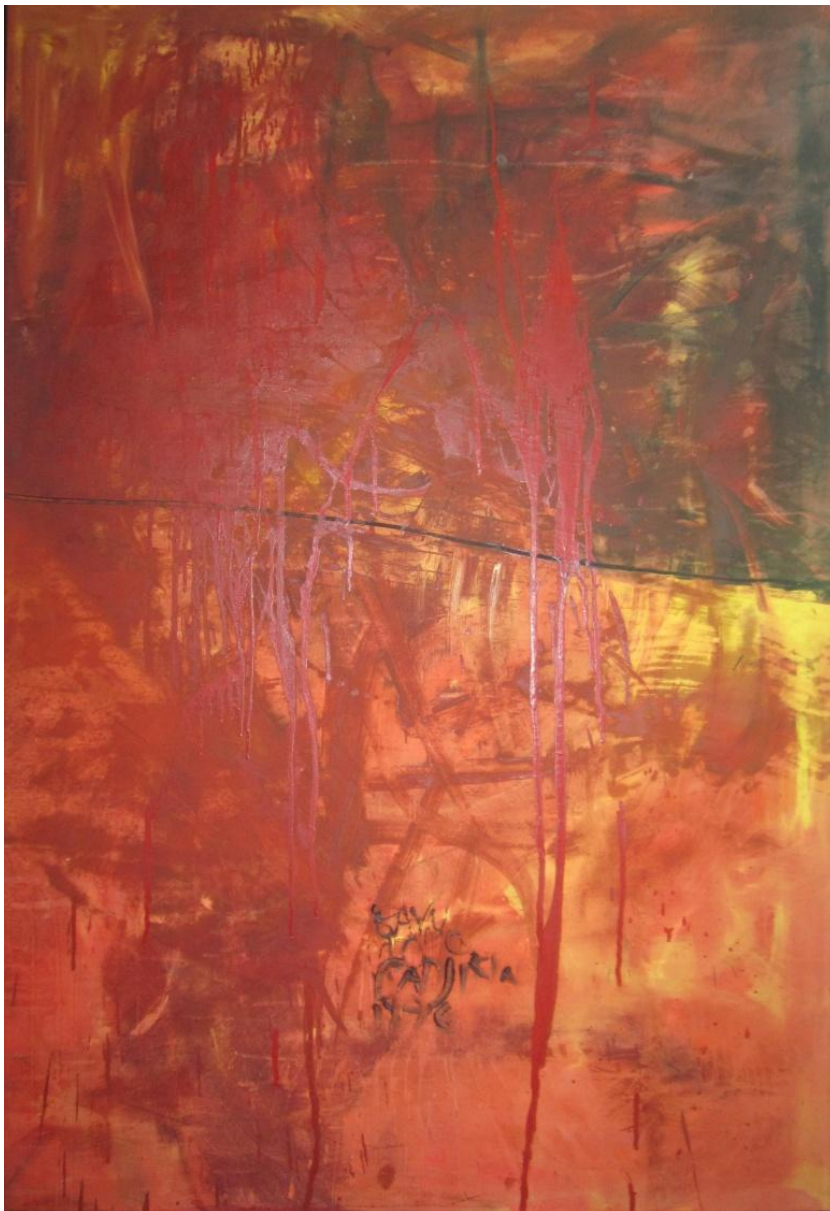




Norma Abbas, No. 83 Al-Ra'uf, 99 Names of Allah, 2001  
Acrylic & collage on board, 40.5 x 56 cm



Norma Abbas, *No. 89 Al-Mughni, 99 Names of Allah*, 2000  
Acrylic & collage on board, 40.5 x 56 cm



Bayu Utomo Radjikin, *Abstract*, 1996  
Acrylic on canvas, 121 x 60 cm



J. Anurendra, *Saffron Monk*, 1998  
Oil on canvas, 91 x 102 cm



Muhd Fauzul Yusri, *Untitled*, 2002  
Mixed media on paper, 27 x 18.5 cm



Muhd Fauzul Yusri, *Padang Huma Merah*, 2002  
Acrylic and mixed media on canvas, 62 x 122 cm



Yusuf Ghani, *Siri Tari*, 1989  
Watercolour on paper, 48 x 36 cm



Yau Bee Ling, *Red Man*, 1999  
Mix media on paper, 25 x 17.5 cm





Yau Bee Ling, *Family*, c. 1999  
Mixed media on paper, 17 x 18.5 cm



Yau Bee Ling, *Couple*, c. 1999  
Mixed media on paper, 24.5 x 17 cm



HUMPTY DUMPTY SAT ON  
A WALL, HUMPTY DUM  
PTY HAD A GREAT FALL;  
ALL THE KING'S HORSES,  
AND ALL THE KING'S ME  
N, COULDN'T PUT HUMPT  
Y DUMPTY BACK TOGET  
HER AGAIN.

Shia Yih Yiing, *Humpty-Dumpty*, 2003  
Oil on canvas, 91 x 122 cm

# SHALINI GANENDRA FINE ART

@ Gallery Residence

[sgfa88@gmail.com](mailto:sgfa88@gmail.com)  
[www.shaliniganendra.com](http://www.shaliniganendra.com)  
fb SGFA

8 Lorong 16/7B, Section 16  
PJ 46350, Selangor, Malaysia

Tel: +603 7932 4740

Hours: Tues to Sat 11am – 7pm